

fastseg

An R Package for fast segmentation

Günter Klambauer and Andreas Mitterecker

Institute of Bioinformatics, Johannes Kepler University Linz
Altenberger Str. 69, 4040 Linz, Austria
klambauer@bioinf.jku.at

Version 1.20.0, October 17, 2016

Scope and Purpose of this Document

This document is a user manual for the R package `fastseg`. It is only meant as a gentle introduction into how to use the basic functions implemented in this package. Not all features of the R package are described in full detail. Such details can be obtained from the documentation enclosed in the R package. Further note the following: (1) this is neither an introduction to segmentation algorithms; (2) this is not an introduction to R. If you lack the background for understanding this manual, you first have to read introductory literature on these subjects.

Contents

| | | |
|----------|---|-----------|
| 1 | Introduction | 3 |
| 2 | Getting started | 3 |
| 2.1 | Data | 3 |
| 2.2 | File formats | 4 |
| 2.2.1 | Vector | 4 |
| 2.2.2 | Matrix | 5 |
| 2.2.3 | GRanges objects | 5 |
| 2.2.4 | ExpressionSet objects | 6 |
| 2.2.5 | Vector | 7 |
| 2.2.6 | Matrix | 8 |
| 2.3 | Plotting the segmentation results | 8 |
| 2.4 | Performance of the method | 10 |
| 3 | Future Extensions | 12 |
| 4 | How to cite this package | 12 |

1 Introduction

`fastseg` implements a very fast and efficient segmentation algorithm. It has similar functionality as DNACopy (Olshen et al., 2004) but is considerably faster and more flexible. `fastseg` can segment data stemming from DNA microarrays and data stemming from next generation sequencing for example to detect copy number segments. Further it can segment data stemming from RNA microarrays like tiling arrays to identify transcripts. Most generally, it can segment data given as a matrix or as a vector. Various data formats can be used as input to `fastseg` like expression set objects for microarrays or `GRanges` for sequencing data.

The segmentation criterion of `fastseg` is based on a statistical test in a Bayesian framework, namely the cyber t-test (Baldi and Long, 2001). The speed-up stems from the facts, that sampling is not necessary in for `fastseg` and that a dynamic programming approach is used for calculation of the segments' first and higher order moments.

For further information regarding the algorithm and its assessment see the `fastseg` homepage at <http://www.bioinf.jku.at/software/fastseg/fastseg.html>

2 Getting started

To load the package, enter the following in your R session:

```
> library(fastseg)
```

2.1 Data

According to the DNACopy package from bioconductor we selected a subset of the data set presented in (Snijders et al., 2001). This data set will be called `coriell`. The data correspond to two array CGH studies of fibroblast cell strains.¹ In particular, the studies **GM05296** and **GM13330** were chosen. After selecting only the mapped data from chromosomes 1-22 and X, there are 2271 data points.

To prepare the data for our examples we execute the following code:

```
> data(coriell)
> head(coriell)
```

| | Clone | Chromosome | Position | Coriell.05296 | Coriell.13330 |
|---|-------------|------------|----------|---------------|---------------|
| 1 | GS1-232B23 | 1 | 1 | 0.000359 | 0.207470 |
| 2 | RP11-82d16 | 1 | 469 | 0.008824 | 0.063076 |
| 3 | RP11-62m23 | 1 | 2242 | -0.000890 | 0.123881 |
| 4 | RP11-60j11 | 1 | 4505 | 0.075875 | 0.154343 |
| 5 | RP11-111005 | 1 | 5441 | 0.017303 | -0.043890 |
| 6 | RP11-51b04 | 1 | 7001 | -0.006770 | 0.094144 |

¹http://www.nature.com/ng/journal/v29/n3/supinfo/ng754_S1.html

```
> samplenames <- colnames(coriell)[4:5]
> data <- as.matrix(coriell[4:5])
> #data[is.na(data)] <- median(data, na.rm=TRUE)
> chrom <- coriell$Chromosome
> maploc <- coriell$Position
```

The main functions of the package are `fastseg` and `toDNACopyObj`. The first one runs the segmentation algorithm and the latter converts the segmentation results to a `DNACopy` object which will be quite helpful for plot functions.

2.2 File formats

The package can handle different file formats: `GRanges`, `ExpressionSet` objects, matrix or a vector.

2.2.1 Vector

```
> data2 <- data[, 1]
> res <- fastseg(data2)
> head(res)
```

`GRanges` object with 6 ranges and 5 metadata columns:

| | seqnames | ranges | strand | ID | num.mark | seg.mean |
|-----|----------|--------------|--------|-------------|-----------|--------------|
| | <Rle> | <IRanges> | <Rle> | <character> | <numeric> | <numeric> |
| [1] | 1 | [1, 1227] | * | sample1 | 1227 | -0.003604316 |
| [2] | 1 | [1228, 1270] | * | sample1 | 43 | 0.461622814 |
| [3] | 1 | [1271, 1357] | * | sample1 | 87 | 0.004317655 |
| [4] | 1 | [1358, 1372] | * | sample1 | 15 | -0.651081333 |
| [5] | 1 | [1373, 2214] | * | sample1 | 842 | 0.014980804 |
| [6] | 1 | [2215, 2271] | * | sample1 | 57 | 0.614116421 |

| | startRow | endRow |
|-----|-----------|-----------|
| | <integer> | <integer> |
| [1] | 1 | 1227 |
| [2] | 1228 | 1270 |
| [3] | 1271 | 1357 |
| [4] | 1358 | 1372 |
| [5] | 1373 | 2214 |
| [6] | 2215 | 2271 |

seqinfo: 1 sequence from an unspecified genome; no seqlengths

```
>
>
```

2.2.2 Matrix

```
> data2 <- data[1:400, ]
> res <- fastseg(data2)
> head(res)
```

GRanges object with 6 ranges and 5 metadata columns:

| | seqnames <Rle> | ranges <IRanges> | strand <Rle> | ID <character> | num.mark <numeric> | seg.mean <numeric> |
|-----|-------------------|---------------------|-----------------|-------------------|-----------------------|-----------------------|
| [1] | 1 | [1, 80] | * | Coriell.05296 | 80 | 0.016815675 |
| [2] | 1 | [81, 84] | * | Coriell.05296 | 4 | 0.134374750 |
| [3] | 1 | [85, 400] | * | Coriell.05296 | 316 | 0.003267547 |
| [4] | 1 | [1, 91] | * | Coriell.13330 | 91 | 0.016150637 |
| [5] | 1 | [92, 140] | * | Coriell.13330 | 49 | 0.485243673 |
| [6] | 1 | [141, 400] | * | Coriell.13330 | 260 | -0.032339504 |

| | startRow <integer> | endRow <integer> |
|-----|-----------------------|---------------------|
| [1] | 1 | 80 |
| [2] | 81 | 84 |
| [3] | 85 | 400 |
| [4] | 1 | 91 |
| [5] | 92 | 140 |
| [6] | 141 | 400 |

seqinfo: 1 sequence from an unspecified genome; no seqlengths

2.2.3 GRanges objects

```
> library("GenomicRanges")
> ## with both individuals
> gr <- GRanges(seqnames=chrom,
+               ranges=IRanges(maploc, end=maploc))
> mcols(gr) <- data
> colnames(mcols(gr)) <- samplenames
> res <- fastseg(gr)
> head(res)
```

GRanges object with 6 ranges and 5 metadata columns:

| | seqnames <Rle> | ranges <IRanges> | strand <Rle> | ID <character> | num.mark <integer> | seg.mean <numeric> |
|-----|-------------------|---------------------|-----------------|-------------------|-----------------------|-----------------------|
| [1] | 1 | [1, 240001] | * | Coriell.05296 | 141 | 0.01973119 |
| [2] | 10 | [1, 65001] | * | Coriell.05296 | 57 | -0.01061286 |
| [3] | 10 | [66906, 108904] | * | Coriell.05296 | 43 | 0.45160927 |
| [4] | 10 | [110001, 142001] | * | Coriell.05296 | 34 | 0.00403140 |
| [5] | 11 | [1, 34421] | * | Coriell.05296 | 52 | 0.01163838 |
| [6] | 11 | [35417, 39624] | * | Coriell.05296 | 14 | -0.65108133 |

```

      startRow    endRow
<integer> <integer>
[1]         1      142
[2]         1       58
[3]        59     102
[4]       103     137
[5]         1       53
[6]        54       68
-----
seqinfo: 23 sequences from an unspecified genome; no seqlengths

> ## with one individual
> gr2 <- gr
> data2 <- as.matrix(data[, 1])
> colnames(data2) <- "sample1"
> mcols(gr2) <- data2
> res <- fastseg(gr2)
> head(res)

GRanges object with 6 ranges and 5 metadata columns:
      seqnames      ranges strand |          ID  num.mark  seg.mean
      <Rle>      <IRanges> <Rle> | <character> <integer>  <numeric>
[1]         1 [ 1, 240001]    * |    sample1     141  0.01973119
[2]        10 [ 1, 65001]    * |    sample1      57 -0.01061286
[3]        10 [ 66906, 108904] * |    sample1      43  0.45160927
[4]        10 [110001, 142001] * |    sample1      34  0.00403140
[5]        11 [ 1, 34421]    * |    sample1      52  0.01163838
[6]        11 [ 35417, 39624] * |    sample1      14 -0.65108133
      startRow    endRow
<integer> <integer>
[1]         1      142
[2]         1       58
[3]        59     102
[4]       103     137
[5]         1       53
[6]        54       68
-----
seqinfo: 23 sequences from an unspecified genome; no seqlengths

>

```

2.2.4 ExpressionSet objects

```

> library(oligo)
> eSet <- new("ExpressionSet")

```

```

> assayData(eSet) <- list(intensity=data)
> featureData(eSet) <- new("AnnotatedDataFrame",
+   data=data.frame(
+     chrom = paste("chr",chrom,sep=""),
+     start = maploc,
+     end   = maploc,stringsAsFactors=FALSE))
> phenoData(eSet) <- new("AnnotatedDataFrame",
+   data=data.frame(samples=samplenames))
> sampleNames(eSet) <- samplenames
> res <- fastseg(eSet)
> head(res)

```

GRanges object with 6 ranges and 5 metadata columns:

| | seqnames | ranges | strand | ID | num.mark | seg.mean |
|-----|----------|------------------|--------|---------------|-----------|-------------|
| | <Rle> | <IRanges> | <Rle> | <character> | <integer> | <numeric> |
| [1] | chr1 | [1, 240001] | * | Coriell.05296 | 141 | 0.01973119 |
| [2] | chr10 | [1, 65001] | * | Coriell.05296 | 57 | -0.01061286 |
| [3] | chr10 | [66906, 108904] | * | Coriell.05296 | 43 | 0.45160927 |
| [4] | chr10 | [110001, 142001] | * | Coriell.05296 | 34 | 0.00403140 |
| [5] | chr11 | [1, 34421] | * | Coriell.05296 | 52 | 0.01163838 |
| [6] | chr11 | [35417, 39624] | * | Coriell.05296 | 14 | -0.65108133 |

| | startRow | endRow |
|-----|-----------|-----------|
| | <integer> | <integer> |
| [1] | 1 | 142 |
| [2] | 1 | 58 |
| [3] | 59 | 102 |
| [4] | 103 | 137 |
| [5] | 1 | 53 |
| [6] | 54 | 68 |

seqinfo: 23 sequences from an unspecified genome; no seqlengths

2.2.5 Vector

```

> data2 <- data[, 1]
> res <- fastseg(data2)
> head(res)

```

GRanges object with 6 ranges and 5 metadata columns:

| | seqnames | ranges | strand | ID | num.mark | seg.mean |
|-----|----------|--------------|--------|-------------|-----------|--------------|
| | <Rle> | <IRanges> | <Rle> | <character> | <numeric> | <numeric> |
| [1] | 1 | [1, 1227] | * | sample1 | 1227 | -0.003604316 |
| [2] | 1 | [1228, 1270] | * | sample1 | 43 | 0.461622814 |
| [3] | 1 | [1271, 1357] | * | sample1 | 87 | 0.004317655 |
| [4] | 1 | [1358, 1372] | * | sample1 | 15 | -0.651081333 |
| [5] | 1 | [1373, 2214] | * | sample1 | 842 | 0.014980804 |

```

[6]      1 [2215, 2271]      * |      sample1      57 0.614116421
      startRow      endRow
      <integer> <integer>
[1]      1      1227
[2]     1228      1270
[3]     1271      1357
[4]     1358      1372
[5]     1373      2214
[6]     2215      2271
-----
seqinfo: 1 sequence from an unspecified genome; no seqlengths

>
>

```

2.2.6 Matrix

```

> data2 <- data[1:400, ]
> res <- fastseg(data2)
> head(res)

```

GRanges object with 6 ranges and 5 metadata columns:

```

      seqnames      ranges strand |      ID num.mark      seg.mean
      <Rle>    <IRanges> <Rle> | <character> <numeric>    <numeric>
[1]      1 [ 1, 80]      * | Coriell.05296      80 0.016815675
[2]      1 [ 81, 84]      * | Coriell.05296       4 0.134374750
[3]      1 [ 85, 400]      * | Coriell.05296     316 0.003267547
[4]      1 [ 1, 91]      * | Coriell.13330      91 0.016150637
[5]      1 [ 92, 140]      * | Coriell.13330      49 0.485243673
[6]      1 [141, 400]      * | Coriell.13330     260 -0.032339504
      startRow      endRow
      <integer> <integer>
[1]      1      80
[2]     81      84
[3]     85     400
[4]      1      91
[5]     92     140
[6]    141     400
-----
seqinfo: 1 sequence from an unspecified genome; no seqlengths

```

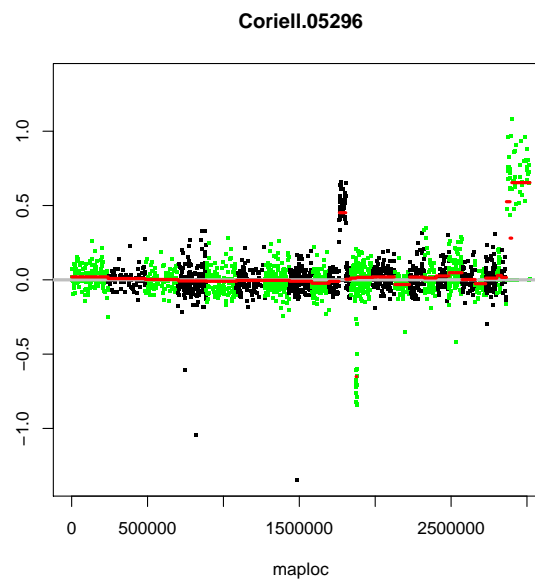
2.3 Plotting the segmentation results

For plotting the data we have to generate an DNACopy object out of the segmentation results:


```
> ## with both individuals
> gr <- GRanges(seqnames=chrom,
+               ranges=IRanges(maploc, end=maploc))
> mcols(gr) <- data
> colnames(mcols(gr)) <- samplenames
> res <- fastseg(gr, segMedianT=0.2)
```

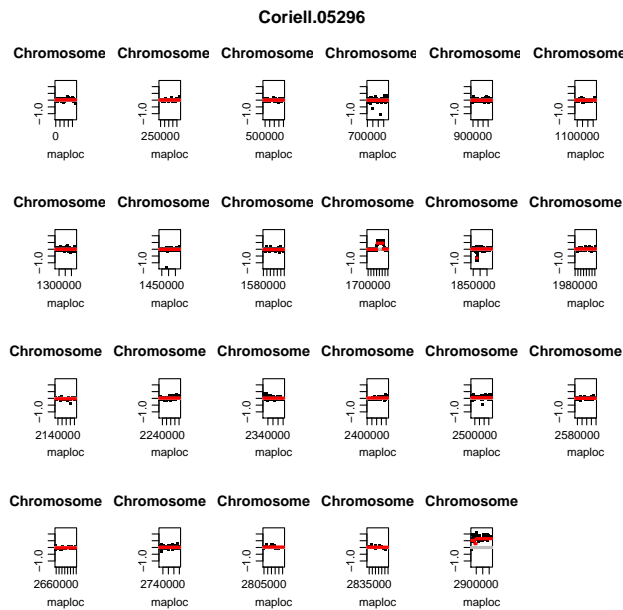
The plotting is done via the plot function of DNACopy:

```
> segPlot(gr, res, plot.type="w")
```



Or alternatively:

```
> segPlot(gr, res, plot.type="s")
```



2.4 Performance of the method

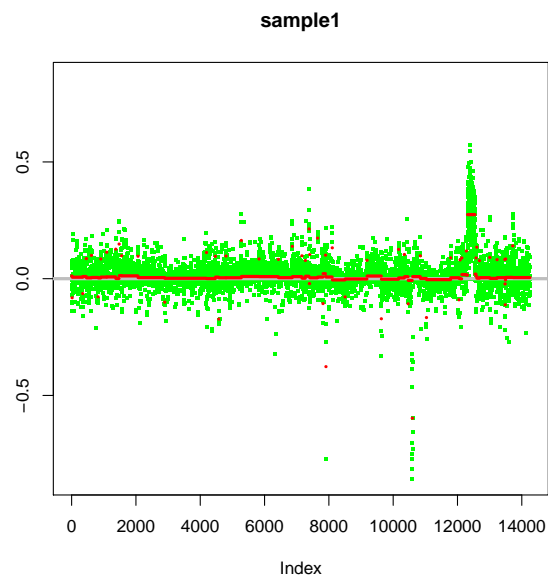
Here we show that `fastseg` outperforms `DNACopy` with respect to computational time on summarized microarray data. The quality of the segmentation result of both `fastseg` and `DNACopy` depends strongly on the methods' parameters.

The data is a small subset of copy number calls which were produced by the `cn.farms` algorithm Clevert et al. (2011) from an Affymetrix SNP microarray experiment of a HapMap sample.

```
> data(fastsegData)
> system.time(res <- fastseg(fastsegData))
```

```
user  system elapsed
0.19    0.00    0.19
```

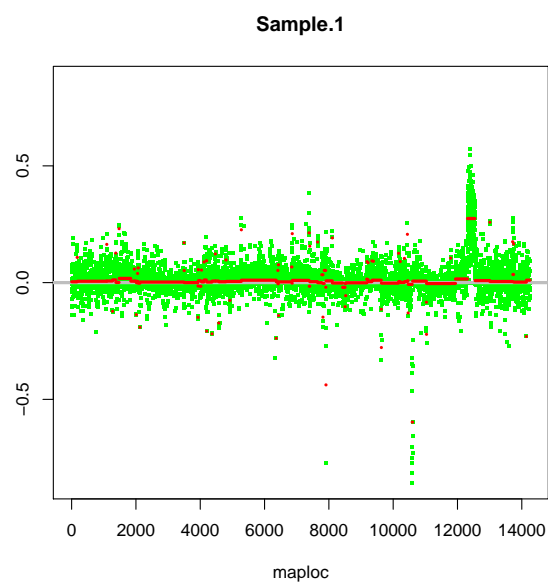
```
> segPlot(fastsegData, res, plot.type="w")
```



```
> library(DNACopy)
> cna <- DNACopy::CNA(fastsegData,chrom="chr1",maploc=1:length(fastsegData))
> system.time(res2 <- DNACopy::segment(cna))
```

```
Analyzing: Sample.1
  user  system elapsed
 4.83    0.00    4.83
```

```
> plot(res2, plot.type="w", xmaploc=TRUE)
```



3 Future Extensions

We are planning to program a parallelized version of this package. Furthermore we will enhance the plot functions by our own.

4 How to cite this package

If you use this package for research that is published later, you are kindly asked to cite it as follows: (Klambauer et al., 2011).

To obtain Bib_T_EX entries of the two references, you can enter the following into your R session:

```
> toBibtex(citation("fastseg"))
```

References

- Baldi, P. and Long, A. D. (2001). A Bayesian framework for the analysis of microarray expression data: regularized t -test and statistical inferences of gene changes. *Bioinformatics*, 17(6):509–519.
- Clevert, D.-A., Mitterecker, A., Mayr, A., Klambauer, G., Tuefferd, M., Bondt, A. D., Talloen, W., Göhlmann, H., and Hochreiter, S. (2011). cn.FARMS: a latent variable model to detect copy number variations in microarray data with a low false discovery rate. *Nucleic Acids Res.*, 39(12):e79.
- Klambauer, G., Mitterecker, A., Clevert, D.-A., and Hochreiter, S. (2011). fastseg: a fast segmentation algorithm. *Unknown*, 99(99):99–99.
- Olshen, A. B., Venkatraman, E. S., Lucito, R., and Wigler, M. (2004). Circular binary segmentation for the analysis of array-based DNA copy number data. *Biostatistics*, 5:557–72.
- Snijders, A. M., Nowak, N., Segraves, R., Blackwood, S., Brown, N., Conroy, J., Hamilton, G., Hindle, A. K., Huey, B., Kimura, K., S, S. L., Myambo, K., Palmer, J., Ylstra, B., Yue, J. P., Gray, J. W., Jain, A. N., Pinkel, D., and Albertson, D. G. (2001). Assembly of microarrays for genome-wide measurement of DNA copy number. *Nat. Genet.*, 29:263–4.