
Plotting using Genominator and GenomeGraphs (Beta)

James Bullard Kasper Daniel Hansen

Modified: April 18, 2010, Compiled: April 4, 2013

This vignette is preliminary, and should be viewed as subject to change. A number of the functions are not directly exported by the package – there is a reason for that.

In this vignette we demonstrate how to visualize data using the *GenomeGraphs* package. The main idea is that we want to build a plotting function which we can use to plot regions. The simplest case is the following:

First, we make a database:

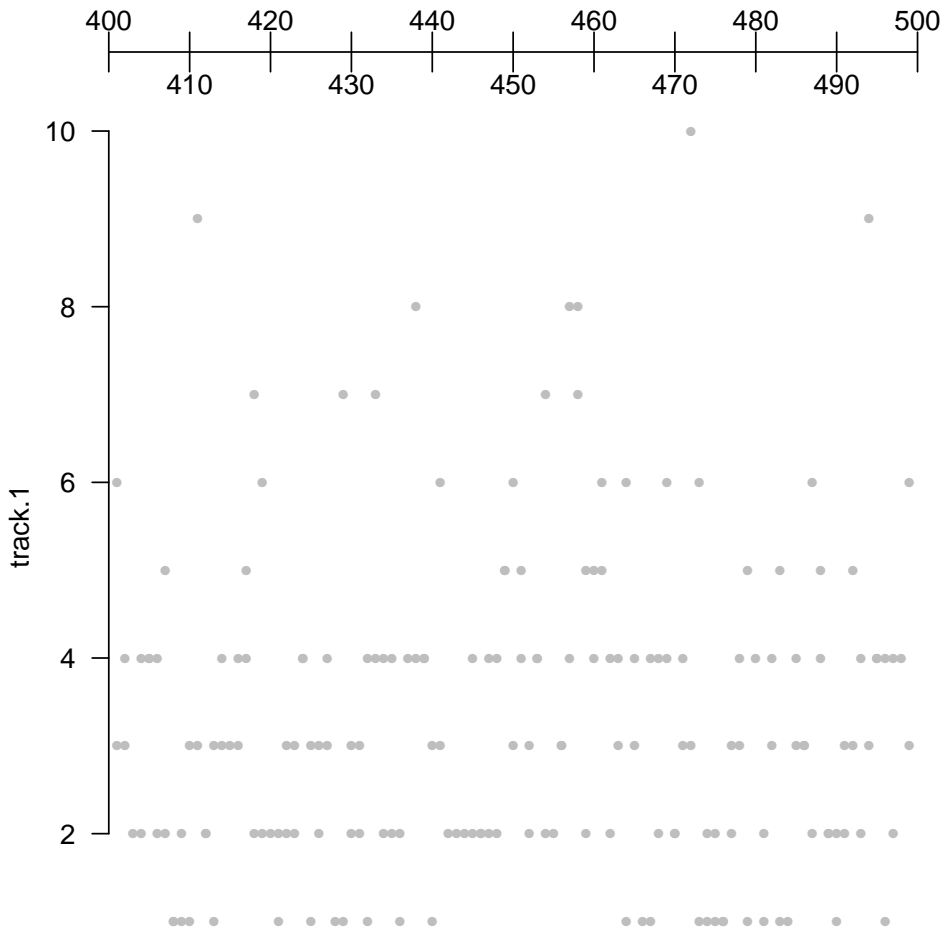
```
> require(Genominator)
> options(verbose = FALSE)
> N <- 100000 # the number of observations.
> K <- 100    # the number of annotation regions, not less than 10
> df <- data.frame(chr = sample(1:16, size = N, replace = TRUE),
+                 location = sample(1:1000, size = N, replace = TRUE),
+                 strand = sample(c(1L,-1L), size = N, replace = TRUE))
> eData <- aggregateExpData(importToExpData(df, dbFilename = "pmy.db", overwrite = TRUE, tablename = "e"))
> annoData <- data.frame(chr = sample(1:16, size = K, replace = TRUE),
+                       strand = sample(c(1, -1), size = K, replace = TRUE),
+                       start = (st <- sample(1:1000, size = K, replace = TRUE)),
+                       end = st + rpois(K, 75),
+                       feature = c("gene", "intergenic")[sample(1:2, size = K, replace = TRUE)])
> rownames(annoData) <- paste("elt", 1:K, sep = ".")

> rp <- Genominator:::makeRegionPlotter(list("track.1" = list(expData = eData, what = "counts")))
> args(rp)

function (chr, start, end, overlays = NULL, title = NULL, ...)
NULL
```

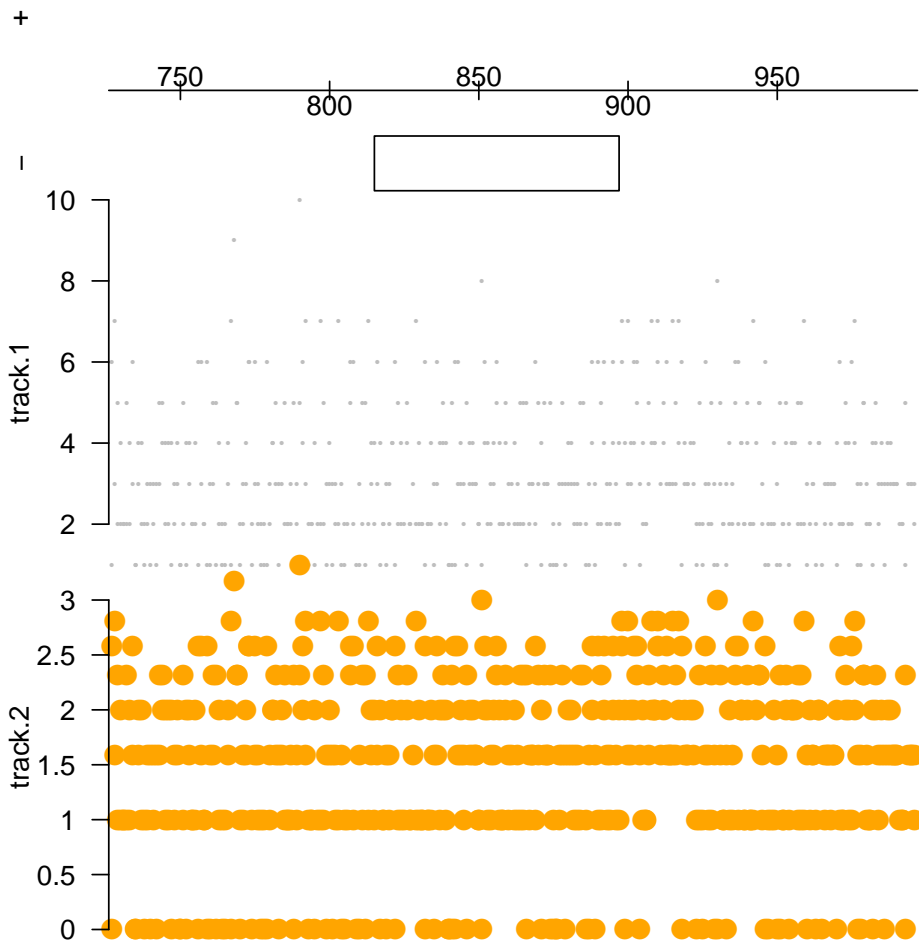
This constructs a function which can be called to view particular pieces of data.

```
> rp(1, 10, 1000)
```

Here we can plot our annotation using the annotation factory construct. This is probably a little advanced. An easier thing is to use Ensembl to do the plotting of the annotation. Often, however, you will want to augment the annotation produced by Ensembl.

```
> annoFactory <- Genominator:::makeAnnoFactory(annoData, featureColumnName = "feature",
+                                             groupColumnName = NULL, idColumnName = NULL,
+                                             dp = DisplayPars("gene" = "blue",
+                                             "intergenic" = "green"))
> rp <- Genominator:::makeRegionPlotter(list("track.1" = list(expData = eData, what = "counts",
+                                                           dp = DisplayPars(lwd=.2, color = "grey")),
+                                             "track.2" = list(expData = eData, what = "counts",
+                                                           fx = log2, DisplayPars(lwd=.3, color = "black"))),
+                                       annoFactory = annoFactory)
> rp(annoData[1,"chr"], annoData[1, "start"] - 100, annoData[1, "end"] + 100)
```



GenomeGraphs also offers a nice way to plot annotation for a given region using data from Ensembl or other sources of annotation - in some cases you have to do a little work because of the way that Biomart indexes the annotation and the way the *Genominator* package works (in this case yeast annotation is stored with Roman numerals denoting the chromosomes).

```
> require("biomaRt")
> mart <- useMart("ensembl", dataset = "scerevisiae_gene_ensembl")
> annoFactory <- Genominator::makeAnnoFactory(mart, chrFunction = function(chr) as.roman(chr))
> load(system.file("data", "chr1_yeast.rda", package = "Genominator"))
> head(chr1_yeast)

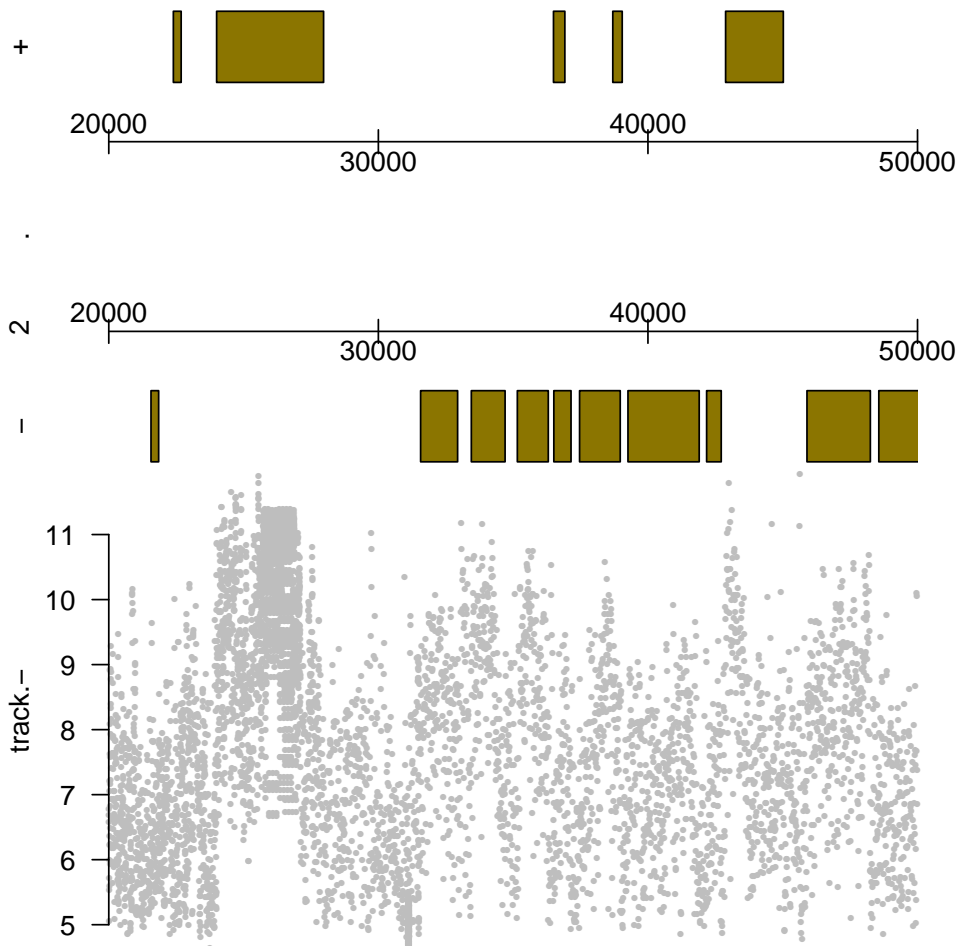
  chr location strand  mRNA_1  mRNA_2
1   1         1     -1 9.038919 8.614710
2   1         1     -1 9.172428 8.558421
3   1         2     -1 9.422065 9.131857
4   1         2     -1 8.679480 8.442943
5   1         2     -1 8.546894 8.794416
6   1         2     -1 8.784635 8.918863

> yData <- importToExpData(chr1_yeast, dbFilename = "my.db", tablename = "yeast",
+                               overwrite = TRUE)
> rp <- Genominator::makeRegionPlotter(list("track.-" = list(expData = yData, what = c("mRNA_1", "mRNA_2"),
+                               fx = rowMeans, strand = -1,
```

```

+                                     dp = DisplayPars(lwd=.3, color = "grey")),
+                                     annoFactory = annoFactory)
> rp(1, 20000, 50000)

```



SessionInfo

- R version 3.0.0 (2013-04-03), x86_64-unknown-linux-gnu
- Locale: LC_CTYPE=en_US.UTF-8, LC_NUMERIC=C, LC_TIME=en_US.UTF-8, LC_COLLATE=C, LC_MONETARY=en_US.UTF-8, LC_MESSAGES=en_US.UTF-8, LC_PAPER=C, LC_NAME=C, LC_ADDRESS=C, LC_TELEPHONE=C, LC_MEASUREMENT=en_US.UTF-8, LC_IDENTIFICATION=C
- Base packages: base, datasets, grDevices, graphics, grid, methods, parallel, stats, utils
- Other packages: BiocGenerics 0.6.0, DBI 0.2-5, GenomeGraphs 1.20.0, Genominator 1.14.0, IRanges 1.18.0, RSQLite 0.11.2, biomaRt 2.16.0
- Loaded via a namespace (and not attached): RCurl 1.95-4.1, XML 3.96-1.1, stats4 3.0.0, tools 3.0.0